



Renton High School Replacement Schematic Design Update

Matt Feldmeyer, R.A. – Executive Director, Capital Planning & Construction

Brianne Tomlin, R.A.– Senior Facilities Program Director, Capital Planning & Construction

Karina Ruiz – Principal, BRIC Architecture

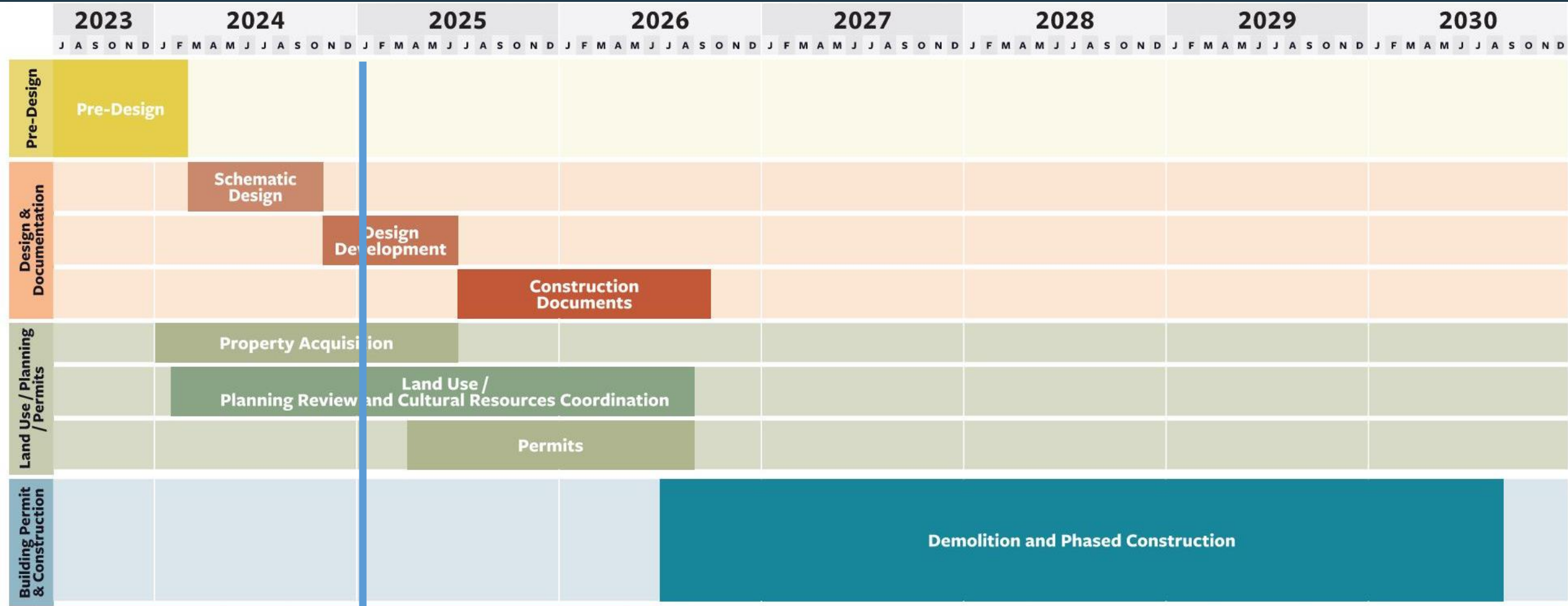
Octavio Gutierrez – Lead Designer, BRIC Architecture

January 22, 2025

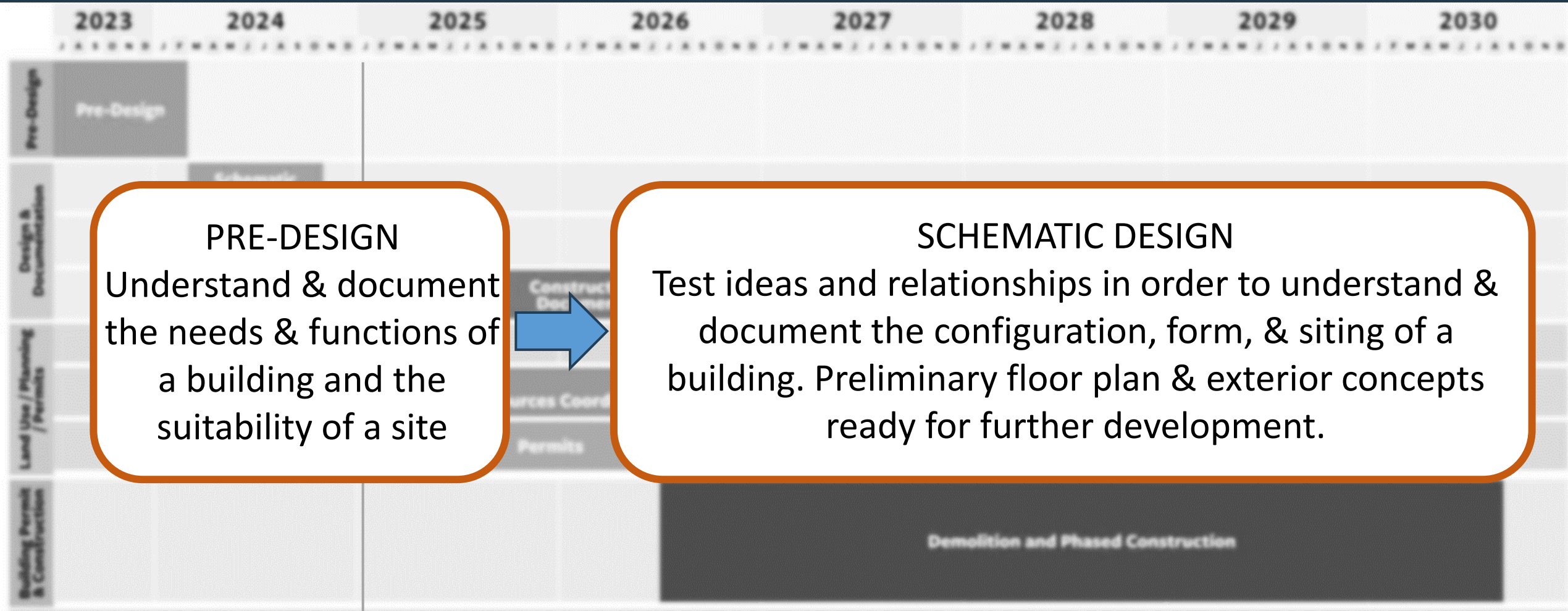
RENTON HS REPLACEMENT SCHEMATIC DESIGN UPDATE

1. Current Project Schedule
2. Schematic Design Process Summary
3. Community Engagement Update from BRIC Architecture
4. Takeaways from Design Process
5. Review of Schematic Design from BRIC Architecture
6. Questions and Request to Approve Schematic Design

RENTON HS REPLACEMENT PROJECT SCHEDULE

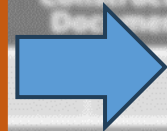


RENTON HS REPLACEMENT PROJECT PHASES



PRE-DESIGN

Understand & document the needs & functions of a building and the suitability of a site



SCHEMATIC DESIGN

Test ideas and relationships in order to understand & document the configuration, form, & siting of a building. Preliminary floor plan & exterior concepts ready for further development.



RENTON HS REPLACEMENT SCHEMATIC DESIGN PROCESS

April 2024: Schematic Design Program focus groups

- Refine arrangement of floor plans
- Updates to Area Program to lower square footage of the proposed building – more efficient.



Spring/Summer 2024: Detailed meetings with local jurisdictions

- City of Renton, Renton Municipal Airport, FAA, Cultural Resource Consultant, Traffic Engineer



RENTON HS REPLACEMENT SCHEMATIC DESIGN PROCESS.



July 2024: Conducted soils investigations and Structural Investigations at Historic 1931 Building

Summer 2024: RHS Design and Equity Committee gave feedback on scale and materials of exterior design concept.

September 2024: Cost review of initial concept with GC/CM Partner Skanska and a 3rd party cost estimator

October 2024: School tours in peer districts

Fall 2024: Refine design concepts based on community and budget feedback and review structural construction options at historic façade.

RENTON HS REPLACEMENT COMMUNITY ENGAGEMENT UPDATE



RENTON HS REPLACEMENT

“NORTH STARS” – DESIGN GUIDELINES

NORTH STAR #1



Our school unifies our diverse community, history, and traditions. This is a place where everyone sees themselves reflected.

NORTH STAR #2



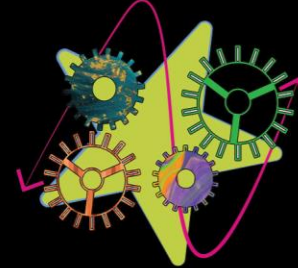
Our school is safe, accessible, and welcoming. This is a place of pride for our community.

NORTH STAR #3



Our school is comfortable, joyful, and supports our social, physical and emotional well-being.

NORTH STAR #4



Our school has unique learning pathways that empower students to pursue their interests now and into the future.

NORTH STAR #5



Our school upholds intercultural understanding, respect, and excellence to create positive global impacts.

RENTON HS REPLACEMENT DESIGN IMPLICATIONS

(SHORTHAND VERSION)



RENTON HIGH SCHOOL NORTH STARS & design implications

- I see this in the design.
- Maybe I see it, but it could be better (or I have questions).
- I don't see it manifesting in the design.
- I can't evaluate at this point, or I need more information.

| #1 | #2 | #3 | #4 | #5 |
|--|---|---|--|---|
| Unifies our diverse community, history, and traditions. | Safe, accessible, welcoming. A place of pride. | Supports social, physical, emotional well-being and JOY. | Unique & empowering learning pathways. | Intercultural respect and excellence for global impact. |
| <ul style="list-style-type: none"> ■ 1.1 Honors histories & traditions. ■ 1.2 Tells the story of who we are. ■ 1.3 Unifies historic & contemporary. ■ 1.4 Celebrates our multiculturalism. ■ 1.5 Honors the land and Indigenous peoples. | <ul style="list-style-type: none"> ■ 1.1 Welcoming common spaces for gathering. ■ 1.2 Connects us to mentors. ■ 1.3 Authentic representation and belonging of BIPOC. ■ 1.4 Authentic representation and belonging of LGBTQIA+. ■ 1.5 Accessible. ■ 1.6 Resilient. ■ 1.7 Safe design & planning. | <ul style="list-style-type: none"> ■ 1.1 Educational opportunities beyond the classroom. ■ 1.2 Accessible supportive & community services. ■ 1.3 Connects to nature & daylight. ■ 1.4 Stewards health through racial and social equity. ■ 1.5 Creates fun and joyful places. ■ 1.6 Space for respite and quiet. | <ul style="list-style-type: none"> ■ 1.1 Flexible & adaptable learning spaces. ■ 1.2 Values all programs. ■ 1.3 Celebrates unique interests. ■ 1.4 Inspiring amenities. ■ 1.5 A variety of pathways and choices. ■ 1.6 Adaptable for a changing world and climate. | <ul style="list-style-type: none"> ■ 1.1 Respects different cultures & lived experiences. ■ 1.2 Connects to real-world experiences. ■ 1.3 Equitable access to programs. ■ 1.4 Empowers students. ■ 1.5 Connects to outside career paths and industry partners. ■ 1.6 Climate & sustainability learning opportunities. |

RENTON HS REPLACEMENT 2024 COMMUNITY ENGAGEMENT

- ASB (Student Government)
- Students from Asian Student Union
- and Filipino Student Union
- Latino Student Union (LSU)
- Spanish-speaking students
- Staff Alumni
- Black Student Union (BSU)
- 10th grade language arts classes
- Kickoff meeting of Student Design & Equity Committee
- Parent Conference Night
 - Tabling display and photography
- 5th grade classes at Lakeridge ES with RHS Teacher Academy students
- Safety & Belonging Summit
- Neighbors & Neighborhood Association



RENTON HS REPLACEMENT WHAT WE HEARD



“We need more seating for students, and all kinds of seating”



“We want the commons to feel like a family backyard”

“An important part of something feeling “Renton” is feeling unique: not like every other school”



“Mixing old with new shouldn’t feel forced”



RENTON HS REPLACEMENT SAFETY & BELONGING SUMMIT

Held Saturday, November 16, 2024 at Renton High School, the purpose of the summit was to bring ideas together from different backgrounds and perspectives to discuss a vision for safety and belonging at the new Renton High School. Summit participants included RHS teachers, parents, community members, and a student.

Key themes discussed included:

- Social Emotional Safety and Belonging
- Community Connections
- Wayfinding and Placemaking
- Transparency and Visual Supervision
- Access Control
- Physical Security



**RENTON HIGH
SCHOOL**

**SAFETY AND BELONGING REPORT
FALL 2024**

RENTON HS REPLACEMENT CONCEPT DESIGN TAKEAWAYS

- Detailed **structural review determined that maintaining only vertical face of 1931 historic façade with new structure directly behind is a complex and costly approach** and there are more efficient options to maintaining the façade.
- Consolidated new high school building is ideal for supervision and community cohesion and gives a better civic presence at 2nd & Logan.
- Centralized site parking and circulation are important for access to campus buildings.
- Construction phasing and duration are major cost drivers and should be simplified/reduced where possible.



RENTON HS REPLACEMENT SITE DESIGN UPDATE

KEY ELEMENTS

- **Three story new high school building** at southeast corner of site.
- **1931 building becomes RSD support space**, with new north wall and systems/egress.
 - We will continue to work with RSD Leadership on how this space is occupied.
- **IKEA PAC main entry moved to south side.**
- Centralized staff parking.
- Expanded student and visitor parking in southwest corner, with proposed additional access from Lake St. and 2nd St.
- **Lighted turf athletic fields complex** in northwest corner, with parking adjacent.
- **Simplified construction phasing.**



RENTON HS REPLACEMENT FLOOR PLANS – GROUND FLOOR

- Main entry from 2nd St near the corner at Logan Ave has secure vestibule with Attendance, Health, and Administration adjacent.
- Administration and Counseling near the main entry
- Student gathering spaces at the center of the building (commons, food service, library and media center)
- Dedicated wings for PE/Athletics with Sports Medicine and Performing Arts
- Performing Arts located adjacent to IPAC to share amenities
- Classrooms, CTE, Art, Science, and Electives distributed in east wings



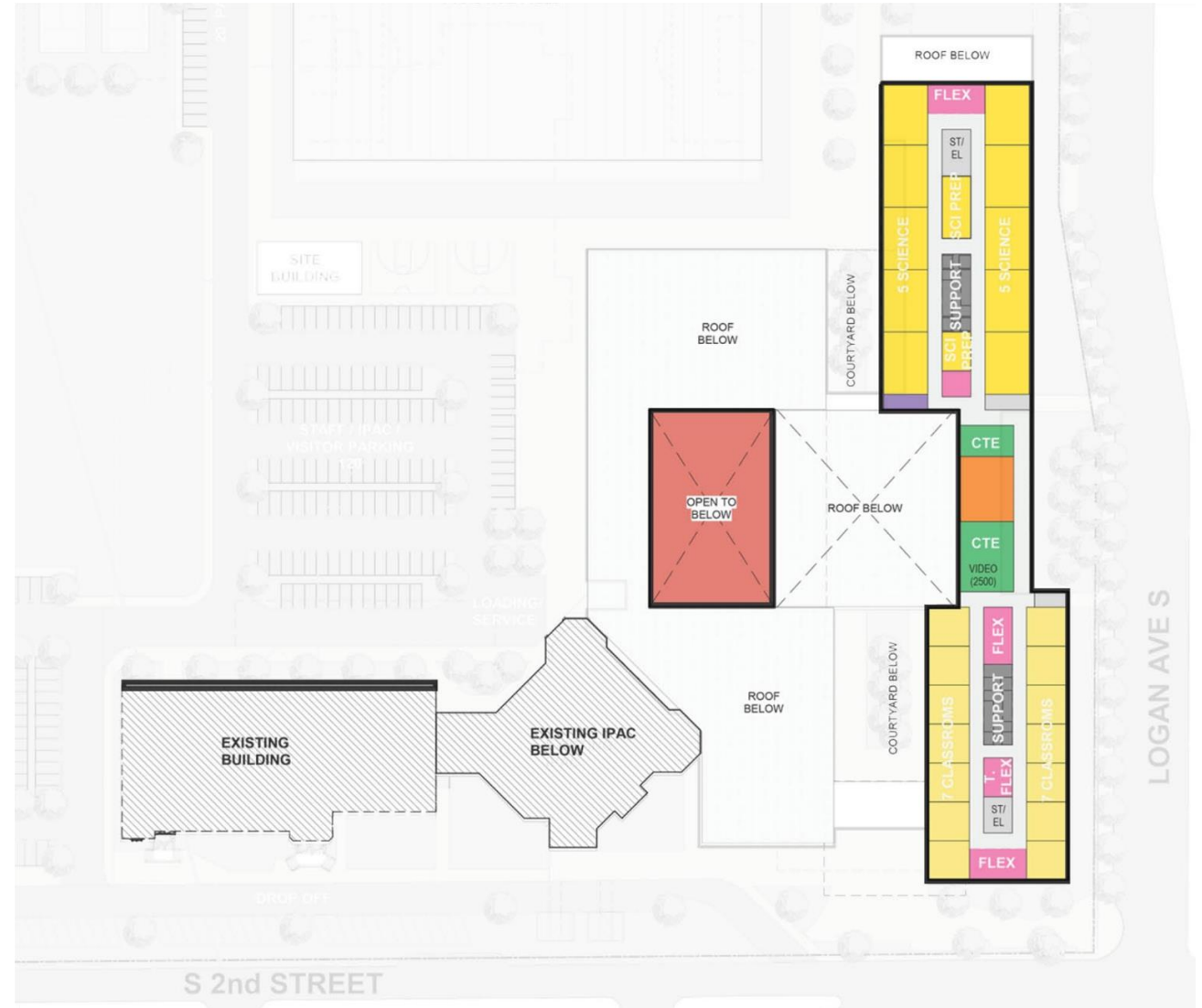
RENTON HS REPLACEMENT FLOOR PLANS – SECOND FLOOR

- Upper commons connects to Student Hub and Career Center
- Centralized staff room
- Classrooms wings with flexible collaboration & support cores.
- Walking track around main gym
- Auxiliary gyms and support storage
- Natural light enters building from courtyards below



RENTON HS REPLACEMENT FLOOR PLANS – THIRD FLOOR

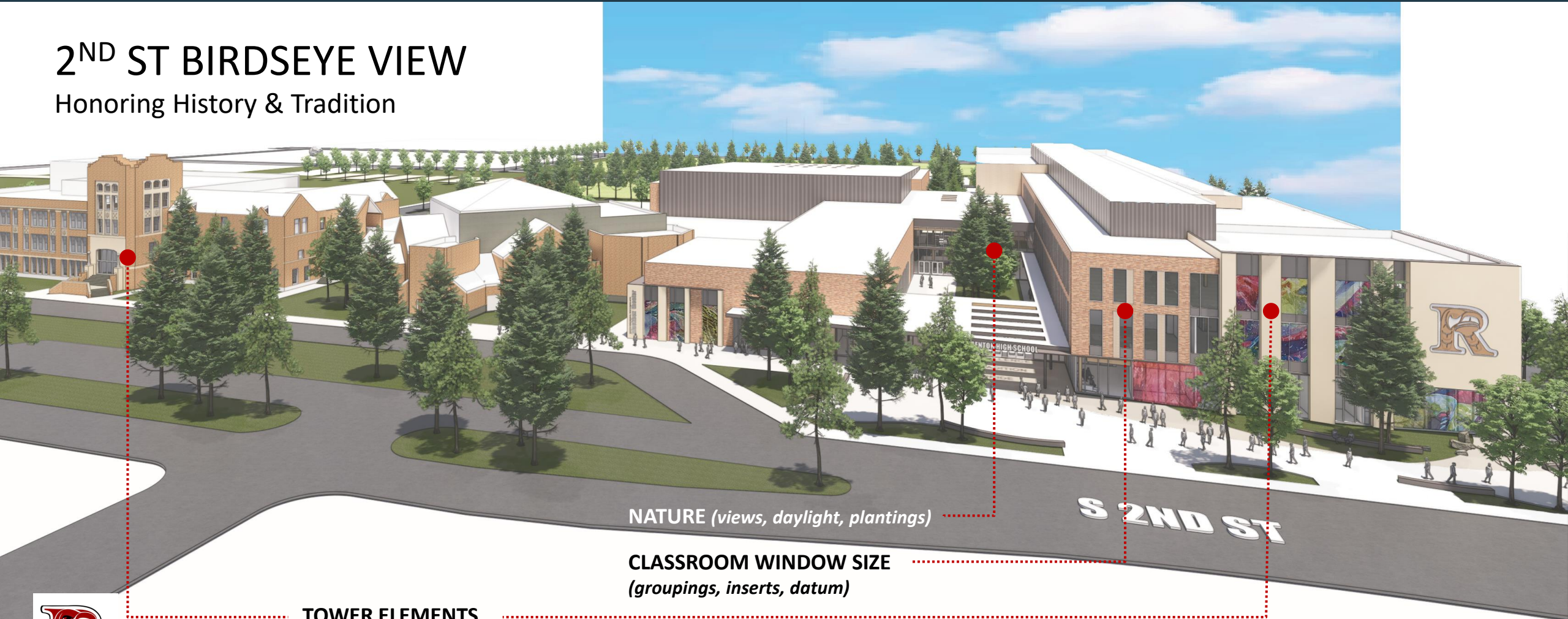
- Third floor has two classroom wings, connected by common areas and CTE
- Science labs all on one floor/wing; with lab prep areas in flexible core



RENTON HS REPLACEMENT EXTERIOR DESIGN CONCEPT

2ND ST BIRDSEYE VIEW

Honoring History & Tradition



NATURE (*views, daylight, plantings*)

CLASSROOM WINDOW SIZE
(*groupings, inserts, datum*)

TOWER ELEMENTS
(*terra cotta detail*)

COMMON MATERIAL PALETTE
(*brick, terra cotta, details, window color*)



RENTON HS REPLACEMENT EXTERIOR DESIGN CONCEPT – 2ND ST

2ND ST BIRDSEYE VIEW

Looking Forward



RENTON HS REPLACEMENT EXTERIOR DESIGN CONCEPT – MAIN ENTRY

Main Entry

Covered Canopy &
Secure Vestibule



RENTON HS REPLACEMENT EXTERIOR DESIGN CONCEPT – SW CORNER

2ND & LOGAN

Urban Plaza as approached
from Downtown Renton



RENTON HS REPLACEMENT EXTERIOR DESIGN CONCEPT – BLACK BOX

Performing Arts

New black box theater in
performing arts wing



RENTON HS REPLACEMENT NEXT STEPS



- Design Development Program Focus Groups
- Present design updates to RHS Design & Equity Committee for feedback.
- Summer 2025 Continued Site and Building investigations
- Continue to develop design for preliminary City of Renton review
- Develop phasing and construction schedule plan
- Updated Cost Estimate
- Begin FAA Applications for height restriction review



QUESTIONS?



**REQUEST APPROVAL ON
RENTON HIGH SCHOOL
REPLACEMENT –
SCHEMATIC DESIGN
*THANK YOU!***