

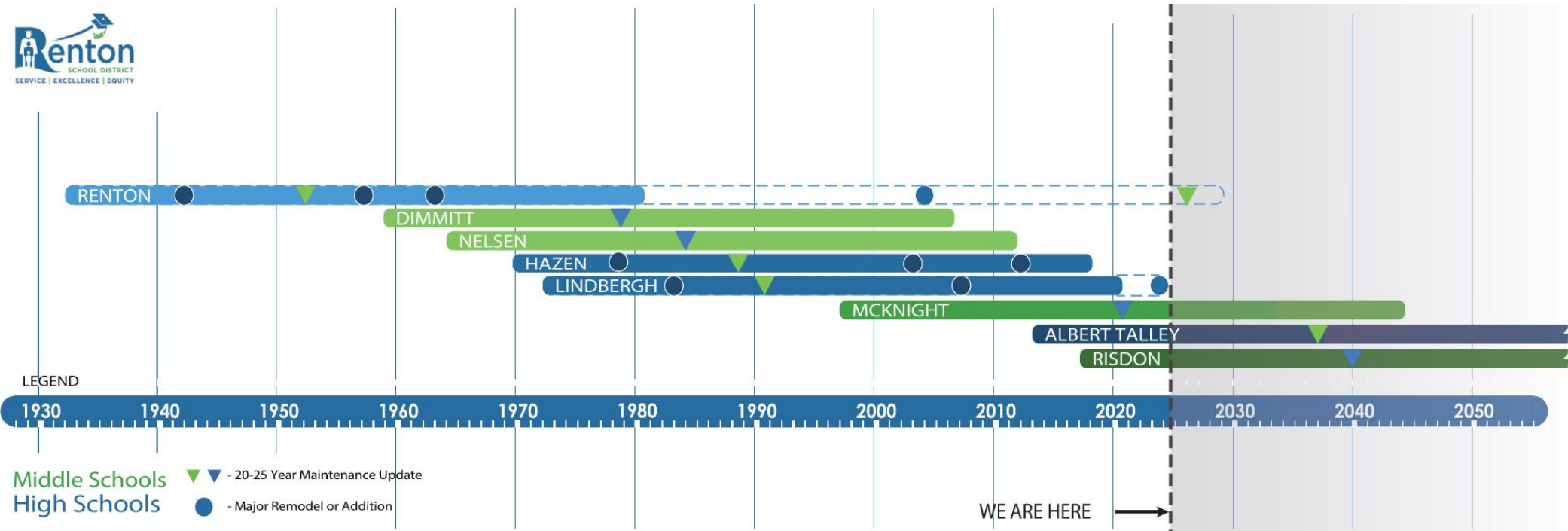
RHS REPLACEMENT – NRNA UPDATE



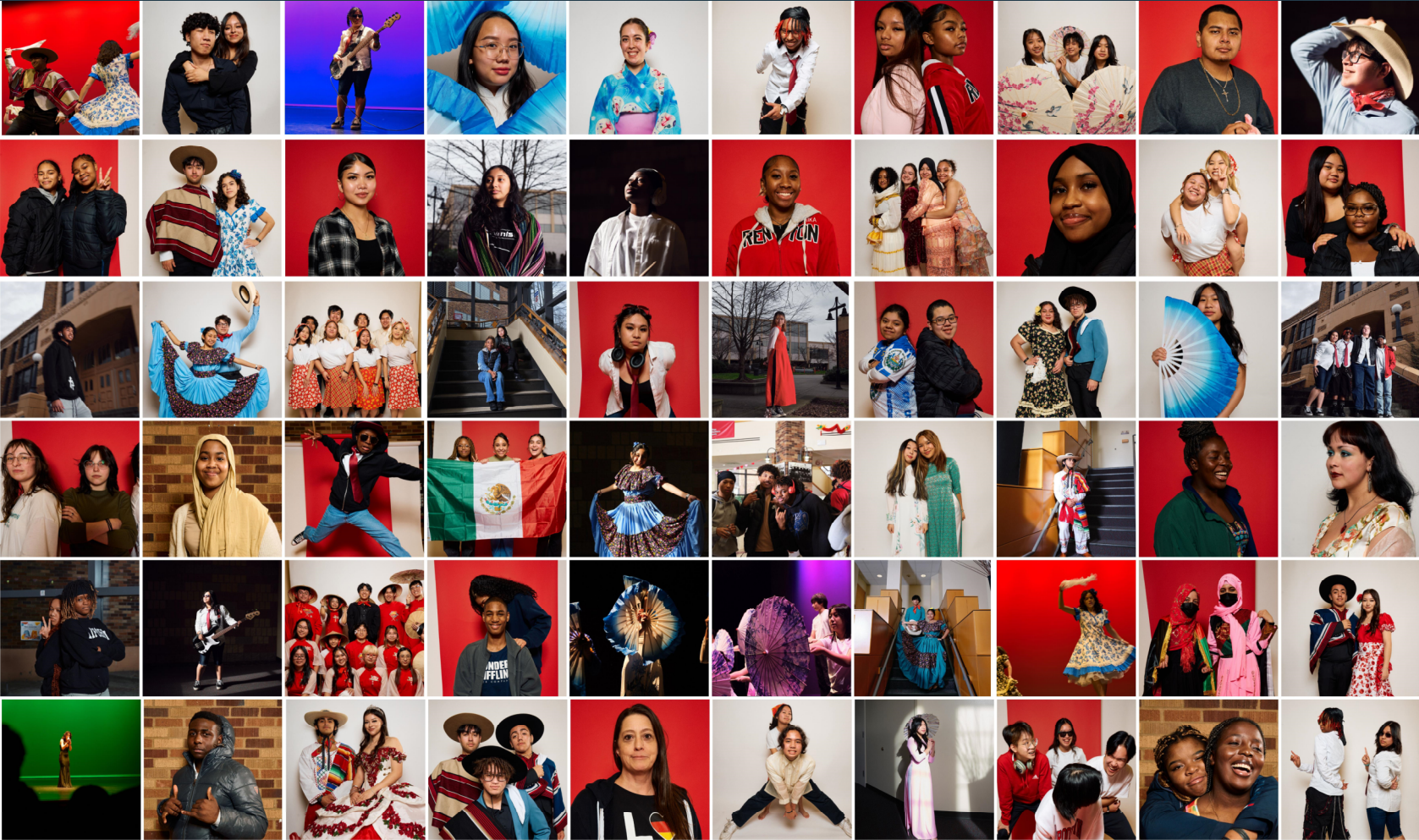
1. Introductions
2. History of the RHS Project & Site Search
3. RHS Project Area
4. Property Acquisition Process
5. Relocation Process & Entitlements
6. Review of Current Design & Project Schedule
7. Traffic Study Process
8. Questions & Discussion



RSD SECONDARY SCHOOLS TIMELINE



RHS: COMMUNITY ENGAGEMENT



RENTON HS STUDENT FEEDBACK

The campus doesn't feel comfortable, much less inspiring.

"Beige and sad" – sense from students that they don't get 'fancy' things at RHS.

Classrooms can feel small, and some don't have windows.

Temperature regulation is really challenging: rooms are consistently too hot in the summer and too cold in the winter.

Lighting feels harsh and overwhelming.

Students want more food options on campus.

Not a strong sense that things 'belong' to the campus: the IKEA PAC doesn't feel easily accessible and like it's 'theirs,' and the fields on campus often have other community activities on them.

RHS isn't seen as a safe place by students or staff.

A shared perception that the campus is too open, and anyone can walk in.

No welcoming entrance that can monitor who comes in and out.

Perception that the surrounding community isn't safe, and that insecurity bleeds onto campus.

RENTON HS STUDENT FEEDBACK

Mostly, students don't see themselves reflected at RHS.

Spaces don't feel reflective of culture or diversity of the school.

The Commons feels empty and bland, and no one really feels like it's a good or inspiring gathering place.

A sense of RHS pride and community has been lost.

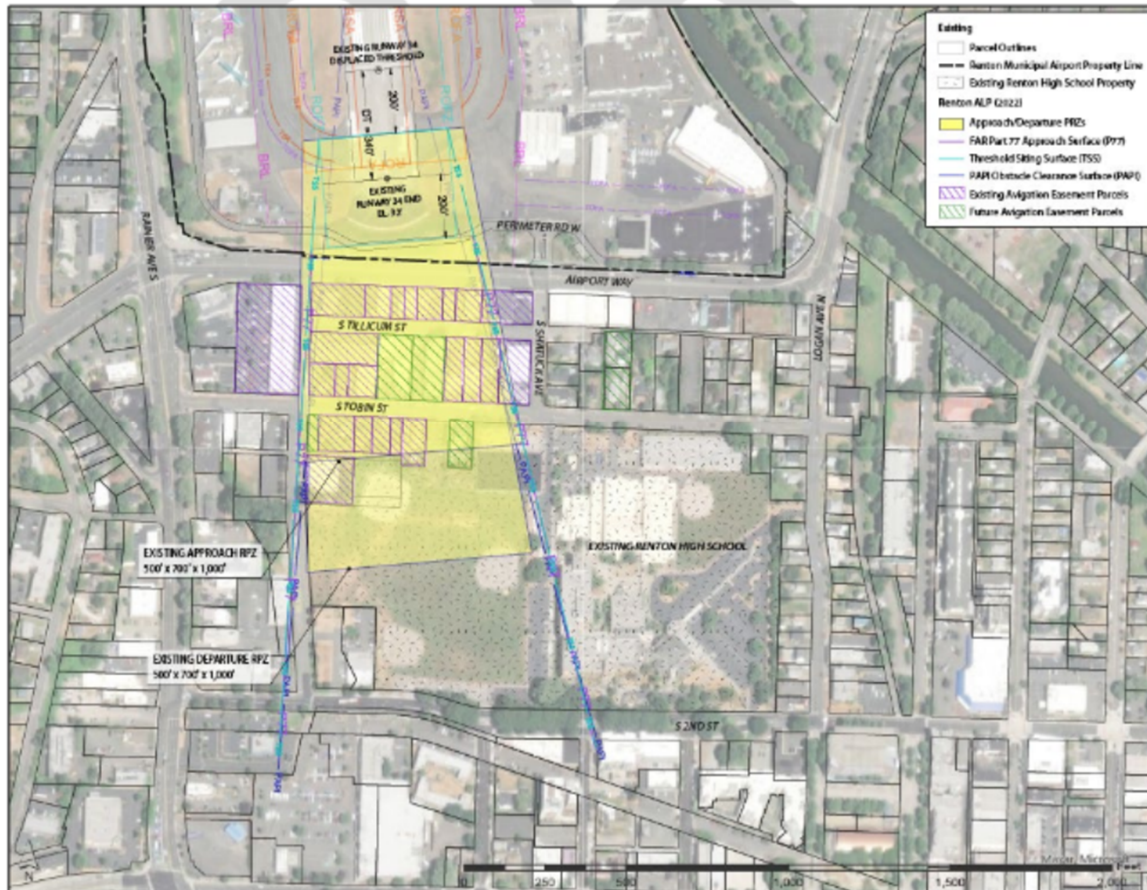
Students feel that RHS is seen as 'the ghetto school,' and the perception in their communities is that RHS isn't a good school, or a nice place to attend.

School is 'just a place you go,' and students struggle to find things they feel proud of in their school.

Some feel that it isn't as bad as it's reputation, but recognize that the reputation exists.

RHS SITE STUDY: RMA IMPACTS

Figure 1 – Renton Airport Layout Plan (2022) - Runway 34 and the Existing Renton High School Site



- Approach and Departure **Runway Protection Zones**
- **Approach Surface** (Airspace/Aircraft protection)
- **Threshold Siting Surface** (Approach to usable portion of runway)
- **PAPI Obstacle Clearance Surface** (visual approach to runway)

EXISTING RHS W/ HEIGHT LIMITS



Transitional Surface 7:1 Slope

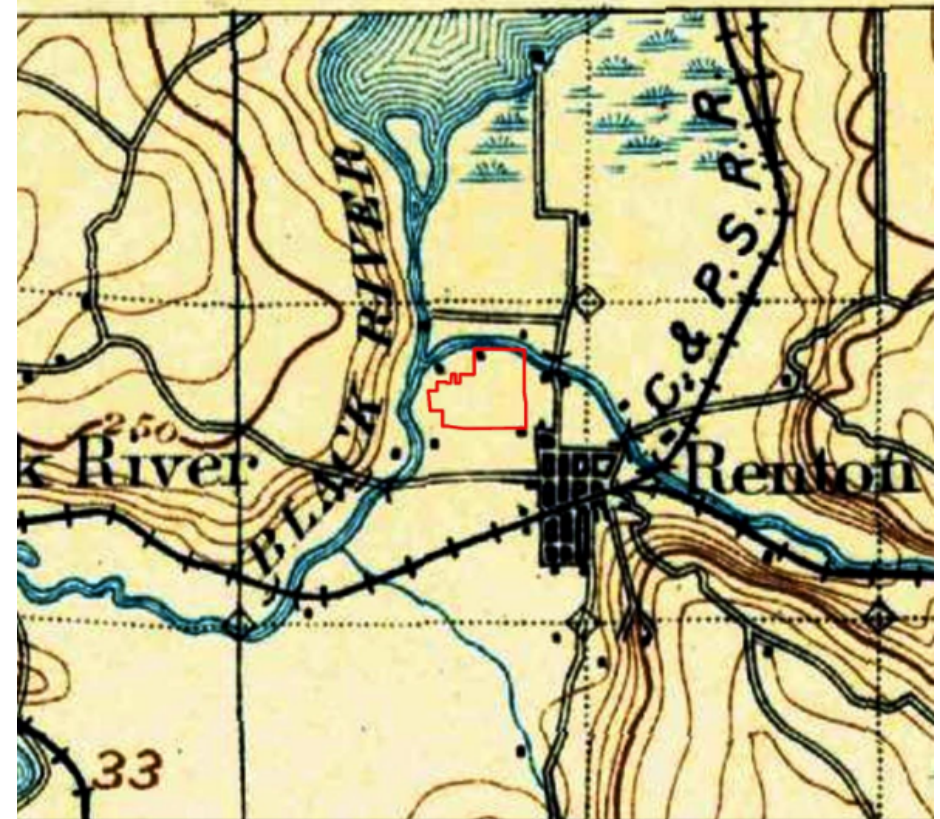
Existing IKEA PAC

Existing 1929 Renton HS Structure

Visual Approach Surface 20:1

RHS: CULTURAL RESOURCES

- RSD is working with Historical Research Associates, Inc. to develop an Archaeological Workplan, conduct further site investigations, acquire DAHP permits, and conduct on-site monitoring during the construction phase.
- Archaeological Work Plan was distributed to appropriate tribal representatives in June 2024 for a 30-day review period.
- Archaeological investigations on current RHS property will be done in late August 2024 with a report to follow.
- Historical Research Associates, Inc. continues to send project documentation to tribal representatives. Tribal representatives include Muckleshoot, Snoqualmie, Stillaguamish, Suquamish, Tulalip, and Duwamish



Renton High School
with 1897 USGS

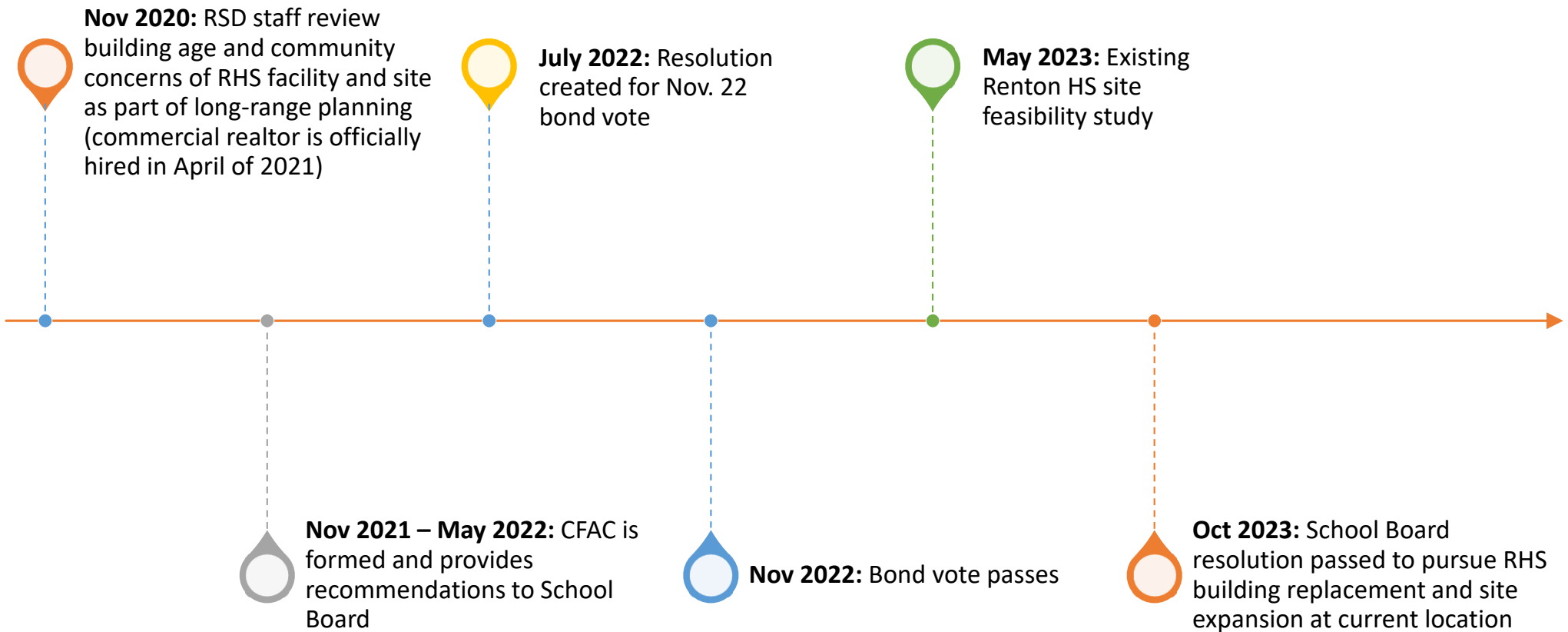


Township/Range:
T7N R4E

USGS Overview
Date: 5/22/2024

Historic Quadrangle:
Tacoma, WA

RENTON HIGH SCHOOL REPLACEMENT PROJECT TIMELINE:



CFAC: NOVEMBER 2021 – MAY 2022



Citizens' Facilities Advisory Committee (CFAC)

Goals of the CFAC

- Review RSD school buildings and support facilities to assure alignment with our mission, core values, & strategic framework
- Assess existing buildings & infrastructure to identify future project needs
- Review enrollment/capacity to verify existing facilities meet current space requirements
- Identify school buildings and support facilities that need improvements, updates, or replacement to provide excellent learning environments for our community